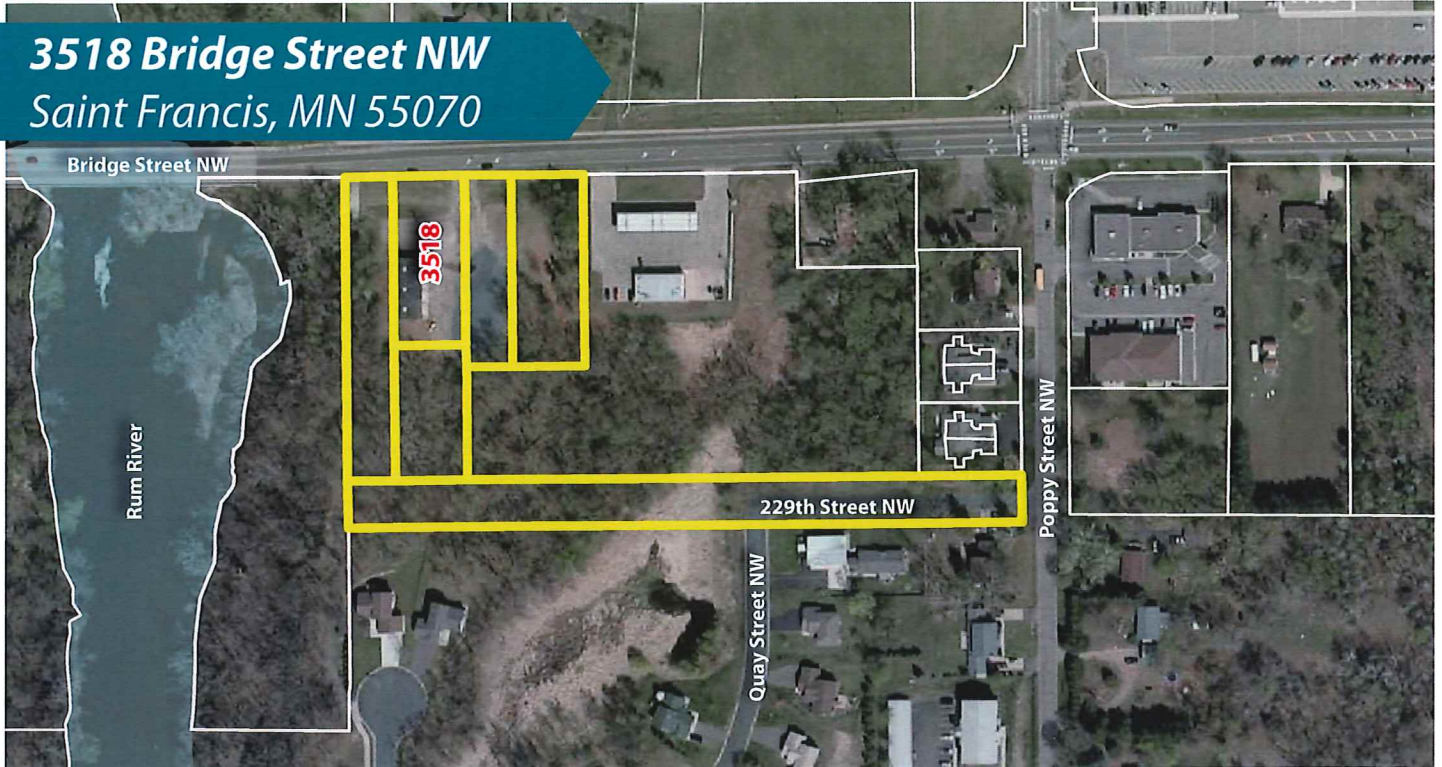


3518 Bridge Street NW
Saint Francis, MN 55070



- **3.97 acres**
- **Zoned B-2 Business/Commerical**
- **Located along the Rum River--perfect access to trails and views**
- **Annual Average Daily Traffic (AADT) of nearly 10,000 vehicles along Bridge Street**

Development Potential



- **Potential restaurant and outfitter with outdoor seating and recreation**
- **Access from Bridge Street NW and 229th Lane NW / Poppy St NW**

Contact Kate Thunstrom at 763-267-6191