



City of
St. Francis

NEWSLETTER

SUMMER 2021 | VOL. 6, NO. 2



Personalized Bricks in Woodbury Park

Woodbury Park was donated to the City at the turn of the century, and the City is taking great care in the planning, maintaining, and preserving the Victorian theme. To raise funds for the upkeep, personalized engraved bricks that will be displayed in the park are being offered. The bricks can be purchased at City Hall on an ongoing basis by completing an order form. Each brick can hold two lines up to 13 characters on each line—enough room for names, memorials, short poems, or lines of scripture. Consider buying a brick for each member of your family. Bricks are an excellent way for children to participate in the park and learn about communities coming together to build something lasting for the common good. Bricks could be purchased for a birthday, Mother’s or Father’s Day, Memorial Day, wedding, anniversary, or as a Christmas gift. The product is very durable and will last for generations. Sample bricks are available for viewing at St. Francis City Hall.

Monetary donations are also welcome for ongoing improvements and maintenance of the park. Make your “tax-deductible” contributions to the City of St. Francis, 23340 Cree Street NW, St. Francis, MN 55070, or stop by City Hall. The names of all contributors donating \$400 or more will be listed on the Park Foundation. If you would like a design on your brick, you may put one on for an additional cost. Please contact City Hall for more information at 763-753-2630.

Message from your Mayor

Even with the City’s water rates, you can still have a green lawn!

FYI: last summer, I tracked how much I spent on watering my lawn and wanted to share the results with you. First of all, I will tell you how I set up the times to water and how long to water each zone.

Because of my address, I water on even days only. I have a six-zone system and water five zones for 17 minutes and one zone that gets a lot of shade for five minutes. When the temperatures are warm at night, I begin watering at midnight and run the system for 90 minutes total. I start at midnight because the water stays in the ground long before the sun rises and starts to heat up. The City’s watering ban, through the summer, states no watering between the hours of 10:00 a.m. until 7:00 p.m. because the sun is at its peak, and any water will evaporate.

Of course, the more rain we get, the less we have to water. Last year this was how much I watered my lawn and how much extra it cost.

- June: watered nine times at the cost of \$27 above my base price of \$91.32.
- July: watered 11 times at the cost of \$45.22 above my base price of \$91.32.
- August: watered five times at the cost of \$9 above my base price of \$91.32.

Continued on page 5

Inside This Issue



DOG REMINDER

| PAGE 2



COMMUNITY PRIDE

| PAGE 4

ANOKA TAX ABATEMENT | PAGE 2

UTILITY NEWS | PAGE 3

TIPS FOR GRASS CLIPPINGS | PAGE 4

JUVENILE CURFEW | PAGE 4

GRILLING SAFETY | PAGE 5

CROSSWALK SAFETY | PAGE 6

CHAMBER OF COMMERCE | PAGE 7

Visit us on social media!



COVID-19 Abatement for First Half Payment of Anoka County Property Taxes

On April 27, the Anoka County Board of Commissioners approved a resolution authorizing the Abatement of Anoka County Property Tax Penalties for First Half Taxes Payable in 2021 in Response to COVID-19 Pandemic. For more information and application, visit www.anokacounty.us/CivicAlerts.aspx?AID=1361

Property Appraisal and the Quintile Review

State law requires Assessors to physically visit and review each property within the city once every five years. This annual review of properties is referred to as the Quintile Review. There are nearly 3,100 residential, commercial, industrial, and apartment properties in St. Francis. Each year the City Assessors must visit and review one-fifth of the properties (about 620) required by state law.

Quintile Review Map

This year the Assessors will be visiting and reviewing all properties in the areas shown below:



If your property is in the review area, here's what you can expect:

- The Assessor will come to the property and knock or ring the doorbell. If an adult is present, they will ask to confirm details that are in the assessment file. Due to the ongoing pandemic, inside reviews will be rare this year again.
- The Assessor will walk around the outside of all buildings (if accessible) to verify exterior characteristics.
- If no one is there when the Assessor stops by, they will leave an orange door hanger with instructions if there are questions.
- Characteristics of the property that affect market value are age, square footage, quality of construction, condition, basement finish, recent remodeling, location, etc.
- The Assessor will be wearing an official identification badge and carries business cards.

In addition to the five-year review area outlined above, the Assessors will visit new construction, permit, remodeling work in all areas of the city.

Thank you, in advance, for your cooperation during this year's assessment review.

Any questions may be directed to Erik Skogquist at 763-412-1966 Ext. 700 or mnassessorerik@gmail.com

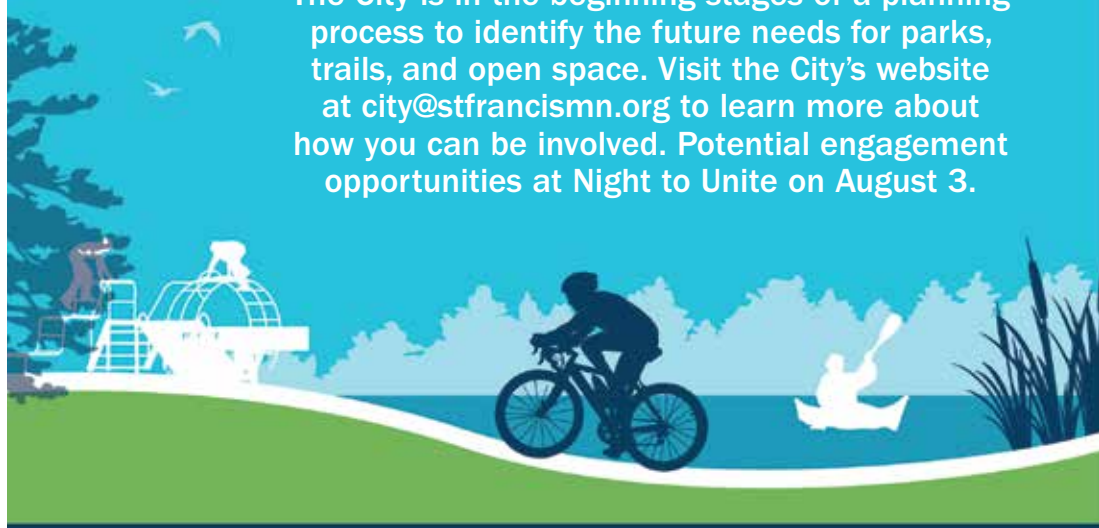
Friendly Dog Reminder!

While you are out having fun with your pet at the City parks, please remember to pick up your dog waste. Let's keep our City's parks looking beautiful!



Help the City of St. Francis plan for future parks, trails, and open spaces!

The City is in the beginning stages of a planning process to identify the future needs for parks, trails, and open space. Visit the City's website at city@stfrancismn.org to learn more about how you can be involved. Potential engagement opportunities at Night to Unite on August 3.



Utility News

In May of 2021, our new wastewater discharge permit will take effect. This permit is renewed every five years and includes all-new expectations and limits set forth by the Minnesota Pollution Control Agency that the City must follow. One of the new limits given to the City was for chlorides or salty water. The wastewater treatment plant must meet a monthly average limit of 354 mg/l. Like most other wastewater facilities, the wastewater facility is not capable or designed to remove chloride from the effluent discharge.

Where do chlorides come from?

You have probably read previous newsletter articles on softeners and chlorides. The chlorides that Public Works worries about come from water softeners. Softeners use ion exchange to remove hardness which is comprised of magnesium and calcium. Salt brine is used to regenerate the media that removes the hardness. When a softener goes into regeneration mode, it discharges that salty brine solution to the wastewater treatment facility.

What can be done to help lower chloride levels in wastewater?

Make sure your water softener is operating efficiently. St. Francis water is about 230 mg/l hardness or 13-14 grains per gallon, so make sure softeners are set to correct that range of hardness. Excessive regeneration wastes salt and water.

What could happen if we do not achieve our limit?

The new wastewater discharge permit has a five-year chloride compliance plan which the City must follow. If the limit is exceeded, the City will be in violation. Continued violation may require the City to redesign the Drinking Water Facility to a Reverse Osmosis Operation. This redesign would be an increased cost to our water and sewer customers.

Hopefully, with your help, limits can be achieved!

Thank you!

St. Francis Public Works Department

Shredded paper—can I recycle it?

It seems like nowadays, almost every home has its own paper shredder, causing many residents to have to dispose of shredded paper. So, the big question with shredded paper is, can it be recycled? The quick answer is yes! The problem with shredded paper is that it's not as easy to recycle as regular paper. Sending paper through a shredder reduces its size. That changes how it can be recycled. Unfortunately, not all curbside haulers will take shredded paper for recycling.

What can be done with shredded paper? For the most part, throw it in the trash. When paper is shredded, it cuts the fibers in the paper, and it's more challenging to turn back into a paper product. Only a few companies handle shredded paper. They are the ones that take them directly from shredding companies or the consumer. In St. Francis, there are four residential curbside haulers. Only Ace Solid Waste offers residential shredded paper collection in your curbside recycle cart. They ask that you place your shredded paper in a paper bag, staple it shut, and then put it in your recycling cart.

Do not place loose shredded paper in your recycling cart! Loose paper shreds cause problems at the Materials Recovery Facility (MRF), slowing down the sorting process. ACE Waste customers can put paper shredding in a paper bag that is stapled shut. You can also place shredded paper in a backyard compost bin. Or even use the shredding for packaging material when sending items through the mail. Residents can reduce the need to shred paper with paperless mailings and electronic billing statements.

The City of Francis offers a couple of recycling events that can help with your shredding needs. We try to have a shredding company come in the spring and also another shredding event in the fall. Residents of St. Francis can bring their papers to shred for free at these events. The events are located at 4020 St. Francis Boulevard NW. Call 763-233-5200 for questions or email sfrecycles@stfrancismn.org.



2020 Consumer Consumption Report

The 2020 Consumer Consumption Report is now available at www.stfrancismn.org/publicworks/page/annual-water-reports.

Please contact Public Works at 763-235-2300 if you have questions about St. Francis' drinking water. You can also ask for information about how you can be part of the decision-making process that may affect water quality.



Take Pride in Our Community by Maintaining Your Property

Having community pride and pride in your home is the foundation of a great city. Maintain your property keeps neighborhood values high and integrity intact. Whether you're a homeowner, tenant, or landlord, spring can be a great time to make home repairs. Standard exterior maintenance includes but is not limited to repairing: peeling/flaking paint, damaged roofing/siding, and damaged decks, fences, and windows. Visit the City's website, stfrancismn.org/building, to determine if you need a permit to make certain repairs.

In addition, it's time to clean up items in the yard that may have been covered by the snow, like pet waste and other debris. All material or yard waste, refuse, or garbage should be properly contained. Sooner or later, your lawn will need to be cut and maintained. Lawns must not exceed six inches in height, and noxious weeds must be removed. Well-maintained properties protect property values, livability, and the overall quality of life for the neighborhood and community.



Some Tips on Utilizing Grass Clippings

Below are some tips to put your grass clippings to good use:

Give your hedges a helping hand. Grass clippings are not only an excellent natural fertilizer, they are also a fantastic defense against weeds. Placing some grass clippings underneath the base of hedges and bushes may prevent weeds from growing. It also has the additional benefit of containing water which will be added to the soil when the grass breaks down. For best results, add about an inch and a half of clippings around the base of the hedge or shrub, avoiding the main stems.

Create your own compost. Every compost heap needs a mixture of green and brown material, and grass clippings are a readily available source of green vegetation for you to use. Creating compost is the easy, cost-effective way to add nutrients to your plants and lawn.

Save your vegetables. If you grow vegetables, you may find that slugs and snails often frequent your crop. One way to remove them without pesticide use is to dry out your grass clippings and then add them in thin layers around your vegetables. This may deter those pesky critters from taking a nibble out of your crops, allowing you to enjoy them that much more.

Things NOT to do with grass clippings:

Some people are often tempted to burn their yard waste. A better use of the clippings is to naturally recycle them to make your garden healthier. It can also create a lot of smoke, which can annoy the neighbors, and it produces carbon dioxide, which is added to the atmosphere.

Throwing grass clippings into a general waste bin should also be avoided. When organic material breaks down, it creates methane which can ignite in large quantities.

Do not allow your grass clippings to go into the city streets while mowing your lawn. It is unlawful and is very harmful to the environment. The distance between your yard and the water's edge is as close as the nearest storm drain. Keeping grass clippings and leaves out of the street is an essential part of protecting for our waters.

St. Francis Juvenile Curfew Laws

Juveniles must abide by city curfew laws. Laws are enforced weekdays, Sunday through Thursday and weekends, Friday and Saturday.

- Juveniles must abide by city curfew laws.
- Juveniles under 12 years of age must be home by 9:00 p.m. on weekdays and 10:00 p.m. on weekends.
- Juveniles 12 to 14 years of age must be home by 10:00 p.m. on weekdays and 11:00 p.m. on weekends.
- Juveniles 15 to 17 years of age must be home by 11:00 p.m. on weekdays and midnight on weekends.

Exceptions to the curfew laws apply when the juvenile is attending, going to, or returning from school, church, or community-sponsored athletic, musical or social activities.



GRILLING FIRE SAFETY

KNOWING A FEW FIRE SAFETY GRILLING TIPS WILL HELP EVERYONE HAVE A SAFE SUMMER.



Only use your grill outside.

Keep it away from siding and deck rails.



Keep a 3-foot safe zone around your grill and campfire.

This will keep kids and pets safe.

Clean your grill after each use. This will remove grease that can start a fire.




Place the coals from your grill in a metal can with a lid once they have cooled.



Open your gas grill before lighting.



Keep an eye on your grill, fire pit or patio torches. Never leave any of them unattended.

STAY FIRE-SAFE THIS SUMMER!

Mayor

Continued from page 1

- September: watered five times at the cost of \$13.50 above my base price of \$91.32.

The total amount for watering my lawn for those four months came to \$94.72 above my normal water usage. As I mentioned before, it helps when mother nature gives us ample rainfall, but my point is that you can have a green lawn without breaking the bank. The key is to keep the water in the lawn as long as possible before the sun comes up.

As the temperatures start to cool at night, I start watering at 4:30 a.m. because the sun is not as hot in the fall compared to the days of summer and, therefore, less evaporation. I hope this information helps you have a green lawn too.

Also, keep a lookout for food trucks coming to our City throughout the summer. You can find out when and wherein the new Spotlight window on the City's website, Facebook page, and the digital sign at Community Park.

Have a safe and great summer!
Regards,
Mayor Feldman

Crosswalk Safety Tips — Slow Down

As a pedestrian

- Although a crosswalk exists at every intersection, whether marked or not, it is still your responsibility to make sure all vehicles have yielded before stepping into a crosswalk and crossing the roadway.
- Whenever approaching a crosswalk, you should remove your earbuds, turn off your music and stop texting or talking on the phone. Be attentive when crossing. Distractions can lead to accidents.
- Make your intention to cross the road known by extending your arm, illuminating an overhead light, extending and waving a crosswalk flag.
- Make eye contact with the driver. Never assume a driver sees you.
- Be especially alert for turning vehicles. Many vehicle-pedestrian incidents occur with a right-turning vehicle.
- If you are not in a marked crosswalk, as a pedestrian, you must yield to all vehicles.

As a driver

- Drivers must yield the right of way to pedestrians lawfully in or stopped at a marked crosswalk.
- Stay alert and reduce speed in areas with crosswalks.
- Avoid distractions—using a cell phone, any hand-held device, listening to loud music, reaching for something on the floor, etc. These types of distractions can easily lead to accidents.
- Proactively check for pedestrians. In the same way, you use your mirrors to be aware of traffic, check sidewalks and side streets for pedestrians who may be crossing at an upcoming crosswalk.
- Wait until pedestrians have crossed at least one lane past the lane you are in before resuming travel.
- Never pass another vehicle that has stopped or is slowing down at a crosswalk.



CALL BEFORE YOU DIG!

Gopher State One Call
 Local: 651-454-0002
 Toll Free: 1-800-252-1166
www.gopherstateonecall.org



CITY OF ST. FRANCIS
FREE DOG LICENSE DAY

Saturday, June 19
9:00 a.m.–Noon

St. Francis
 Police Department
 4058 St. Francis Blvd. NW
 St. Francis

Start Seeing Motorcycles

The weather is starting to turn, and that means it's time to share the road with everyone. The St Francis Police Department would like to remind everyone to stay safe on the roadways this summer and “Start Seeing Motorcycles.”

Please follow these safety tips from the Minnesota Office of Traffic Safety:

- Motorists are advised to watch for motorcycles in traffic and always look twice before turning or changing lanes.
- Riders are advised to wear full, brightly-colored protective gear, including a DOT-approved helmet.
- Riders should travel at safe speeds, pay attention, maintain a two-second following distance and ride sober.
- Riders should seek safety training.





St. Francis Area Chamber of Commerce

PO Box 655
St. Francis, MN 55070

763-438-5163
chamber@stfrancischamber.org
www.stfrancischamber.org

The St. Francis Area Chamber of Commerce serves the needs of its membership in working toward the common goal of a growing, healthy business environment and community as a whole.

Chamber Members

Ace Solid Waste, Inc.
Advanced Automotive Care, Inc.
Anoka Hennepin Credit Union
Anoka Ramsey Community College
Barna, Guzy & Steffen, LTD
BTO Signs
Casey's General Store
City of St. Francis
Collision 2000
Connexus Energy
King's County Market
Dairy Queen Orange Julius
Dawn Tschumper – American Family Insurance
ECM Publishers, Inc.
Edward Jones Investments
Elaine M. Mustari, CPA, LLC
Freedom Strategy Group
G and H Auto LLC
Gold Star Kennels
Goodrich Pharmacy
Hakanson Anderson
Hidden Haven Golf Club
Highland Money Management, Inc.
Kwik Trip
Lakeside Cabinets and Woodworking
Lee Carlson Center for Mental Health & Well-Being
Mansettis Pizza and Pasta
McDonald's Minuteman Press
Ham Lake
North Anoka County Emergency Foodshelf
North Central Insurance Agency
Northland Screw Products, Inc.
Northstar Outdoors

Opp Family Chiropractic, P.A.
Patriot Lanes Bar & Grill
RE/MAX Results Michelle Anderson
Rum River Construction Consultants
Rum River Tree Farm
Sara Sauer, CPA, LLC
St. Francis Area Schools
St. Francis Collision & Glass
St. Francis Dental Care
St. Francis Lions Club
St. Francis Physical Therapy
St. Francis True Value Hardware

St. Francis United Methodist Church
St. Francis Veterinary Clinic
Steve's Collision
Subway – St. Francis
T. Bryce & Associates, Inc.
TC Net-Works, Inc.
The Bridge Church
The Oaks of Lake George
The Ponds Golf Course & Restaurant
The Refuge Golf Club & Restaurant
Trinity Lutheran Church & School
Village Bank

We support and encourage you to shop all of our local businesses.



St. Francis community—summer FUN is coming to a location near you!


The St. Francis Area Chamber of Commerce is working hard to pull together fun activities for our families, friends and neighbors to partake in this summer.

Please stay tuned to Chamber Facebook page for details, dates, vendors and updates. It will surely be fun for the whole family!


Call, text or Facebook message us

with suggestions, questions, or to volunteer to help!

We appreciate our community standing together during these trying times.

 **St. Francis Area Chamber of Commerce**

 **www.stfrancischamber.org**

 **612-757-6949**

#staypositive #supportlocal #saintspride



23340 Cree Street NW
St. Francis, MN 55070

PRESORTED
STANDARD
U.S. POSTAGE
PAID
Permit No. 8
St. Francis, MN
55070

ECRWSS POSTAL PATRON

Events Calendar

Visit the City's website www.stfrancismn.org for calendar updates during COVID-19 restrictions.

A background image of colorful fireworks exploding in the night sky, with colors including blue, green, red, and orange.

Fireworks Do's and Don'ts

The St. Francis Police Department understands the desire to show patriotism through the use of fireworks. Please remember, consumer fireworks may not be used on public property (i.e., parks, roads, alleys, schools, government property, etc.). Purchasers of consumer fireworks must be at least 18 years old. Explosive and aerial fireworks are prohibited for public sale, possession, and use. Prohibited fireworks include firecrackers, bottle rockets, missiles, roman candles, mortars, and shells. Several violations can be enforced in regards to possessing or displaying unlawful fireworks. It is unlawful for any person to use or discharge legal fireworks between the hours of 10:00 p.m. and 8:00 a.m. in the city limits.

If you have any questions, please feel free to contact the St. Francis Police Department at 763-753-1264.

City Council Meetings

First and third Monday each month at 6:00 p.m.
(If a holiday, the meeting will be Tuesday.)

Planning Commission Meetings

Third Wednesday each month at 7:00 p.m.
Meetings are held at

St. Francis Area Schools District Office
4115 Ambassador Boulevard NW

Agendas and minutes online: www.stfrancismn.org

City Hall Location

23340 Cree Street NW
St. Francis, MN 55070

Hours Monday-Thursday 7:00 a.m.-5:30 p.m.
Contact Us city@stfrancismn.org 763-753-2630
Website www.stfrancismn.org

City Council

| | |
|------------------------------|--------------|
| Mayor Steve Feldman | 763-235-2310 |
| Councilmember Sarah Udvig | 763-235-2311 |
| Councilmember Robert Bauer | 763-235-2312 |
| Councilmember Kevin Robinson | 763-235-2313 |
| Councilmember Joe Muehlbauer | 763-235-2314 |