



City of
St. Francis

NEWSLETTER

SUMMER 2016 | VOL. 1, NO. 2

Parking on grass?

This may seem minor to some, but the effect of parking on grass creates large issues within the city. We all have now heard of the new MS4 permit imposed on our city. This is a mandated requirement passed down from federal/state levels to keep storm water clean to protect our bodies of water, including the Rum River and Seelye Brooke. Protection starts with city road drainage systems, streets, ditches, man-made channels, storm drains and more.

This is where your grass becomes so important to the city. By driving and parking on grass and top soils in your yard, you are pulling away the vegetation that keeps the dirt in place. As this erosion happens, the soil moves from your yard into the streets and ditches when it rains or snow melts, also known as storm water. This is a violation of the MS4 permit and could result in fines to our city if the problem is not addressed. Please, do not park or drive on your yard. Let's keep the city moving forward to protect the water and local costs.

Summer Reminders

- Inspect furnace filters and change them frequently. The manufacturer will have intervals specified in their manual, but this is dependent on the frequency of use.
- Make sure your air conditioner is operating at peak efficiency before the days get hot. Consider hiring a heating and cooling expert to complete a checkup.
- Have your water heater flushed and inspected. Sediments that develop over time can greatly reduce its lifespan.

Message from your Mayor



Greetings to all!

The birds are singing, the flowers are blooming, and the temperatures are rising as summer approaches. Among other things this brings the annual

Pioneer Days Celebration the first weekend in June, which is put on by the St. Francis Chamber of Commerce. They will need many volunteers for this event and it is not too late to help. Call the Chamber today!

Our Police Chief, Jeff Harapat, retired on April 28th after 30+ years in the department. Thank You, Chief Harapat, for your many years of service to the St. Francis Community! We wish you many happy years in retirement.



continued on page 2

INSIDE THIS ISSUE



[ROUNDAABOUTS](#) | [PAGE 4](#)



[CITY CURFEW LAWS](#) | [PAGE 2](#)

[ACCESSORY BUILDINGS](#) | [PAGE 2](#)

[2015 GENERAL FUND](#) | [PAGE 2](#)

[FIREWORKS](#) | [PAGE 3](#)

[WATERING BAN](#) | [PAGE 3](#)

[WASTEWATER UPDATE](#) | [PAGE 3](#)

[RECYCLE DAYS](#) | [PAGE 3](#)

[CHAMBER CURRENTS](#) | [PAGE 6](#)

Mayor..from page 1

Please join me in welcoming our new Police Chief, Jake Rehling. Chief Rehling has 17+ years with the department and has held every position within the department.

Our Fire Chief, Matt Kohout, has been working hard to make St. Francis a “Heart Safe” Community. Thank you, Chief Kohout! This has been one of my goals since the beginning of my term as mayor. Visit their website, <http://heartsafe-community.org/> to find out more information.

QUARTERLY SPOTLIGHT:

Please welcome our newest employee, Jodie Steffes, Office Assistant.

As the newest smiling face in City Hall, Jodie provides outstanding customer service to our residents and will greet you with enthusiasm the moment you call or come in to City Hall. If you need a building permit application or would like to pay your water bill in person, she’s the one you will likely speak with.

She comes to us with 10 years of Office Administration and Customer Service experience, Sales and Marketing knowledge and the ability to wear many different hats when needed! With a love of learning, she completed her Associate Degree while working and raising children, and plans to continue her education as time allows.

She currently resides in Andover, MN with her husband and four children. In her spare time, she enjoys fitness and motivating others to live a healthy lifestyle. She ran her first 5k in 2014 and her goal is to run a marathon someday.

CALL BEFORE YOU DIG!

Gopher State One Call
 Local: 651-454-0002
 Toll Free: 1-800-252-1166
www.gopherstateonecall.org



How big of an accessory building can I have?

For basic information, start in City Code Chapter 10 (Zoning), Chapter 18: Accessory Buildings. This section identifies that any structure over 120 sq. ft. will require a permit to be submitted to the city. Key items for approval include a survey with detailed measurements, size and placement of building, same/similar exterior to primary building, and total number of buildings on the property.

When it comes to size and number of accessory structures allowable, the following applies:

Zoning/Acres	Max # of Detached Buildings	Total Detached Square Footage
Urban Area	1	200 sq. ft.
Less than 1 acre	1	600 sq. ft.
1 acre but less than 2.5 acres	1	1200 sq. ft.
2.5 acres but less than 5 acres	2	1500 sq. ft.
5 acres but less than 10 acres	2	4000 sq. ft.
10 acres or larger	2	5000 sq. ft.
PUD	See local requirements.	

City Curfew Laws

Under 12 years of age must be home by 9 p.m. weekdays and 11 p.m. on weekends.

12 to 14 years of age must be home by 10 p.m. weekdays and 11 p.m. weekends.

15 to 17 years of age must be home by 11 p.m. weekdays and Midnight on weekends. (Exceptions apply when the juvenile is attending, going to or returning from school, church or community sponsored athletic, musical or social activities.)

2015 General Fund Operations

	Final Budgeted Amounts	Actual Amounts	Variance with Final Budget
Revenue	\$4,394,723	\$4,550,024	\$155,301
Expenditures	4,072,723	3,710,472	362,251
Excess of revenues over expenditures	322,000	839,552	517,552
Other financing sources (uses)			
Transfers in	60,000	60,000	-
Sale of capital assets	28,000	33,375	5,375
Transfers out	(410,000)	(757,700)	(347,700)
Total other financing sources (uses)	(322,000)	(664,325)	(342,325)
Net change in fund balances	-	175,227	175,227
Fund balances, January 1	2,589,057	2,589,057	-
Fund balances, December 31	\$2,589,057	\$2,764,284	\$175,227

Wastewater Treatment Expansion

A lot of progress has happened since crews began working on the wastewater treatment facility in July 2015. Due to the mild winter, crews were able to pour about 85%, or 7000 cubic yards, of concrete needed for the facility. The largest concrete pour was for the bio solids tank, requiring about 900 cubic yards for the floor alone.

Concrete work for the aeration tanks, the clarifiers and the bio solids tank has been completed. Crews have been finishing all of the pipe work inside the tanks. Protective domes are expected to be installed over the clarifiers by the end of summer. When this work is completed, the clarifiers will hopefully be put into service.

The precast building where all of the

process pumps are located and where operators will run the new facility has also been assembled.

Concrete pouring for the tertiary (secondary treatment) building has begun. This building will contain all of the equipment required for disinfecting the wastewater. It will contain three filters that will assist in the removal of phosphorus to help meet stringent limits before discharging the wastewater or reusing the wastewater for irrigation.

The maze of process piping continues to be installed underground. This network of pipe will convey wastewater to each treatment process. The project is still on track to be finished by 2017.

Chloride

With the issuance of our new wastewater permit in June of 2015, the city is required to meet a more strict chloride limit. If chloride limits are not met, state agencies can force a city into compliance. This could mean additional treatment at the water plant and/or wastewater treatment plant, which would likely cause water and sewer rates to rise. By making sure your water softener is operating efficiently, you can help to lower the chloride levels in the wastewater and this, in turn, will help the city meet its chloride compliance limits. The drinking water in St. Francis has about 13-14 grains per gallon of hardness, so make sure to adjust your softeners accordingly.

Watering Ban

The City of St. Francis will be enforcing an odd-even watering ban. Odd addresses may water on odd days only, and even addresses may water on even days only. You may not sprinkle between the hours of 10 a.m. and 7 p.m. Restrictions begin on May 1st and run through September 30th.

St. Francis Summer Recycle Events

June 18 | July 16 | August 20
9:00 a.m. - Noon

Lepage and Sons
23602 University Ave. NW
Bethel, MN 55005

Items Accepted at NO Charge

- Clothing dropped off at donation box
- Scrap metal
- Automotive batteries
- Cardboard
- Recyclables

Items Accepted For a Fee

Yard waste, \$1 per bag

Appliances, \$10 (No commercial)

Gas refrigerators, ammonia or Lp, \$75+

Electronics, \$4

TVs

Up to 18 inch, \$15

19 to 28 inch, \$25

29+ inch, \$35

Console TVs, \$40

*Wooden TVs add \$5

Mattresses, \$16

Box springs, \$16

Household batteries, \$1.25 lb.

Light bulbs

Fluorescent 4' and Under, \$.50 each

Fluorescent 5' and Over, \$.75 each

U Shape and Circular, \$.75 each

Compacts, \$.50 each

High Intensity Discharge Lamps,
(HIDS), \$2.50 each

Broken Fluorescent Lamps, \$1.00 per lb

Incandescent, \$.35 each

PCB Ballast, \$1.00 per lb

Tires

Motorcycle, \$4

Car, \$8

Truck, \$10

Tractor, \$20

Questions? Public Works: 763-233-5200
No Hazardous Materials Accepted.



Fireworks

The police understand the desire to show your patriotism through the use of fireworks. Please remember, consumer fireworks may not be used on public property (i.e. parks, roads, alleys, schools, government property, etc.). Purchasers of consumer fireworks must be at least 18 years old. Explosive and aerial fireworks are prohibited for public sale, possession, and use. Prohibited fireworks include firecrackers, bottle rockets, missiles, roman candles, mortars and shells. There are several violations that can be enforced in regards to possessing or displaying unlawful fireworks.

If you have any questions, please feel free to contact the police department.

Bridge Street Roundabouts

Project Purpose & Need

Bridge Street (County State Aid Highway 24) is an Anoka County roadway that provides both local and regional connections and is an important Rum River crossing. It also plays a key role in the movement of students to and from the schools within the City of St Francis.

The project purpose is to:

Improve safety for motorists, pedestrians and bicyclists.

Provide better traffic circulation for all vehicles including buses and larger trucks, especially during peak periods and at school start and stop times.

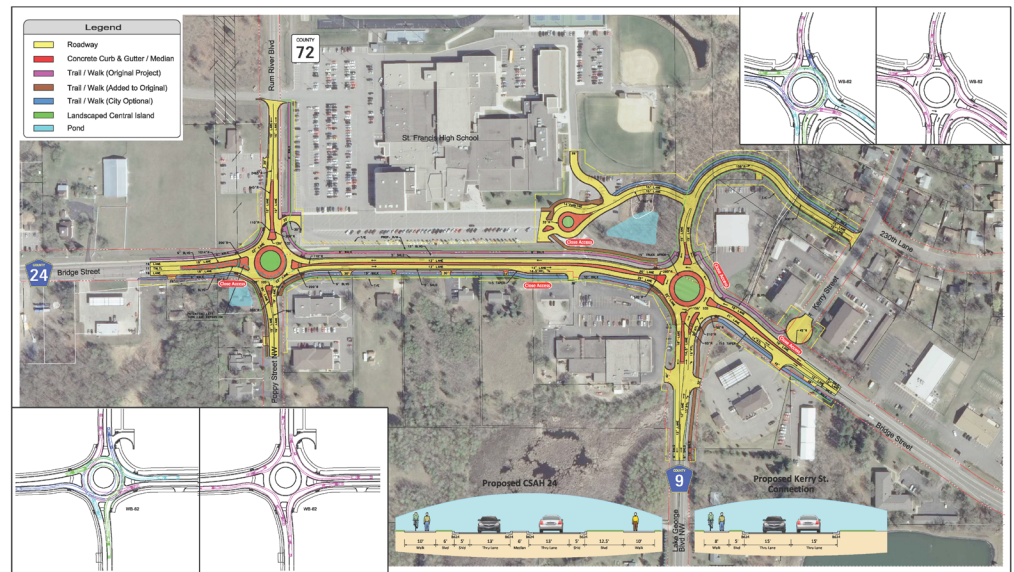
Improve roadway structure and surface (accommodations for heavier vehicles).

Reduce property impacts. Roundabouts can have a smaller footprint and allow for less traffic lanes to move vehicles.

Where have roundabouts been installed?

- 119 roundabouts have been installed in the state of Minnesota
- Most metro counties have installed roundabouts
- Roundabouts have been installed near schools
- Roundabouts have been installed on both urban and rural roadways

Sources: Information on roundabouts is courtesy of Anoka County and www.awpa.net "Roundabouts: The sustainable intersection choice."



CSAH 24 (Bridge Street) Improvements
Anoka County, Minnesota

Project Layout
May 11, 2014

Anoka County Update

The Bridge Street project continues this spring as crews are continuing work on the completion of Kerry Street. Crews are scheduled to begin storm sewer installation in early May. Once this is completed, class 5 gravel base will be placed. This will be followed by concrete curb and gutter placement and asphalt paving.

Once the school year is completed in June, sanitary sewer installation will begin as crews connect into the City of St. Francis sewer project on Rum River Boulevard near the Rum River County Park entrance. This work will continue south to Bridge Street and then continue east to a point just west of Zion Parkway NW. During this sanitary sewer installation phase, traffic will be shifted to the opposite side of the roadway. The signal system at Bridge Street and Rum River Boulevard will be taken out of operation and a four way stop condition will be installed.

After the completion of the sanitary sewer installation, crews will begin with storm sewer installation along Bridge Street, followed by the construction of the roadway itself.

It should be noted that there will be closures at Poppy Street and at Rum River Boulevard at various times during summer construction. These closures will not be concurrent. Notifications of these closures will be made 10 days prior to the driving public. Notifications such as closures and other project progress related information will also be available on the Anoka County Highway Department website, anokacounty.us/1578/Construction-Weekly on a weekly basis. If you have questions, you may contact Harry Grams, Anoka County Construction Engineering Supervisor, at 763-862-4250.

What is the public response to roundabouts?

Attitude	Before Project	After Project
Very Negative	23%	00%
Negative	45%	00%
Neutral	18%	27%
Positive	14%	41%
Very Positive	0%	32%

NCHRP Synthesis 264, Modern Roundabout Practice in the United States.

Sustainability Benefits of Roundabouts

Safety. Roundabouts have been proven to typically be far safer than traditional stop sign or signal-controlled intersections. In a number of documented studies roundabouts reduced injury crashes by 75 percent at intersections where stop signs or signals were previously used for traffic control, according to the Insurance Institute for Highway Safety (IIHS). Studies by the IIHS and Federal Highway Administration have shown that roundabouts achieved these safety benefits:

- A 37% reduction in overall collisions
- A 75% reduction in injury collisions
- A 90% reduction in fatality collisions
- A 40% reduction in pedestrian collisions

There are several reasons why roundabouts help reduce the likelihood and severity of collisions:

Lower travel speeds. Drivers are required to slow down and yield to traffic before entering a roundabout. Speeds in the roundabout are typically in the 15 to 20 miles per hour range. The collisions that occur in roundabouts are typically minor and cause few injuries since they occur such low speeds.

No traffic signal to speed through or cause sudden stops. Roundabouts are designed to promote a continuous, circular flow of traffic.

One-way movement. Roads entering a well-designed roundabout have slight curves to direct drivers into the intersection at the correct angle and help them travel counterclockwise around the roundabout. This movement eliminates the possibility for right-angle or head-on collisions that occur at traditional intersections.

Roundabouts are also generally safer for pedestrians. Pedestrians walk on sidewalks around the perimeter and cross only one direction of traffic at a time. Crossing distances are relatively short, and traffic speeds are lower than at traditional intersections.

Reduce delay, improve traffic flow. Contrary to some perceptions, roundabouts normally move traffic through an intersection more quickly, and with less congestion on approaching roads. Roundabouts promote a continuous flow of traffic whereas intersections with traffic signals and stop signs have to wait for a green indication or come to a full stop before proceeding through the intersection. Traffic is only required to stop or yield when necessary so many roundabouts usually process more traffic in the same amount of time.

Studies by Kansas State University measured traffic flow at intersections before and after conversion to roundabouts. In each case analyzed, installing a roundabout led to at least a 20 percent reduction in delay. Additional studies by the IIHS of intersections in three states found that roundabouts contributed to an overall 89 percent reduction in vehicle delays and 56 percent reduction in vehicle stops.

Trucks, Buses and Other Large Vehicles. Roundabouts can be designed to accommodate the turning radii of large trucks, trailers and buses just like any other intersection. Roundabouts generally are designed with truck “aprons”—a slightly raised area around the inner circle that provides trucks, buses, and other large vehicles additional room to navigate the roundabout.

Helpful Links

Project Background/Description

anokacounty.us/2484/St-Francis-Bridge-Street-Roundabouts

How does a roundabout work?

dot.state.mn.us/roundabouts/

Navigating a roundabout

dot.state.mn.us/roundabouts/navigating.html

Benefits of a roundabout

youtube.com/watch?v=tx7Gc6QZvp4&feature=youtu.be

Roundabouts are also considered the “greenest” intersection alternative.

Question	Strongly Agree	Agree	Undecided	Disagree	Strongly Disagree
Did the roundabout improve safety?	54%	23%	14%	4%	4%
Did the roundabout improve traffic operations?	70%	18%	5%	4%	3%
Do you view this roundabout as successful?	68%	19%	6%	4%	3%
Agreeable with other roundabouts in city?	67%	18%	4%	3%	7%

Source: City of Roswell, GA Survey via e-mail newsletter, Twitter and Facebook. 742 responses--99% had driven through the roundabout



Chamber Currents

A publication of the
St. Francis Area Chamber of Commerce,
St. Francis, Minnesota

Board of Directors

President

Joe Raus, *Premier Specialties*

Vice President

Eric Schmoll, *American Mortgage & Equity Consultants, Inc.*

Co-Treasurer

Kerby Scherer, *St. Francis Subway*

Co-Treasurer

Brenda Jacobs, *St. Francis Dental*

Secretary

Shannon Mart, *Anoka Hennepin Credit Union*

Directors

Joe Buhn, *The Refuge Golf Club*

Dom Kowitz, *Verizon/CellOnly*

Sam Schudi, *Pillar Signs & Graphics*

Lindsey Johnson, *St. Francis Physical Therapy*

For more information:

www.stfrancischamber.org
chamber@stfrancischamber.org
763-438-5163

Button Patrol!

Prizes will be handed out at random to those wearing Pioneer Days buttons during Pioneer Days weekend!

Mission Statement

The St. Francis Area Chamber of Commerce serves the needs of its membership in working toward the common goal of a growing, healthy business environment and community as a whole.

St. Francis Area Chamber of Commerce Members

Ace Solid Waste, Inc.
Advanced Automotive Care, Inc.
Air Comfort Heating & Air Conditioning, Inc.
American Family Insurance Mary Dresch Agency
American Mortgage and Equity Consultants, Inc.
Annabelle's Photography
Anoka Hennepin Credit Union
Anoka Ramsey Community College
Anytime Fitness
Barna, Guzy & Steffen, LTD
Beef O' Bradys
Bolton & Menk, Inc.
Captain's on Long Lake
Casey's General Store
Verizon/ Cell Only
Central Heating & Cooling, LLC
City of St. Francis
Coldwell Banker Burnet – Amy Lazere
Collision 2000
Connexus Energy
County Market
Crown Electric
Custom Catering
Dairy Queen Orange Julius
Daves Heating and Air Conditioning
Dennis Philp Construction, Inc.
Dugout Bar and Grill
Dusty's Drain Cleaning & Plumbing
ECM Publishers, Inc.
Edward Jones Investments
Elaine M. Mustari, CPA, LLC
Gerdin Auto & Tire
Gold Star Kennels
Greater Midwest Realty
Hidden Haven Golf Club
Highland Money Management Inc.
Isanti Retail Meats
Joslin & Moore Law Office, P.A.
Lakeside Cabinets and Woodworking
Legal Shield
Mansettis Pizza and Pasta
McDonalds
Minnesota Star Realty
North Anoka Plumbing, Inc.
Northstar Outdoors
Nowthen Plumbing, Inc.
Opp Family Chiropractic, P.A.
Patriot Lanes Bar & Grill
Pillar Signs and Graphics
Pizza Hut
Premier Specialties
Printing Unlimited
ReMax Associates Plus, Larry D. Anderson
Restyle & Consignments, LLP
Rum River Tree Farm
Sara Sauer, C.P.A., LLC
Schroeder's Creekside Stables
St. Francis Bottle Shop
St. Francis Collision & Glass
St. Francis Community for Drug Awareness
St. Francis Dental Care
St. Francis Fire Department
St. Francis Insurance Agency, Inc.
St. Francis Lions Club
St. Francis Physical Therapy
St. Francis True Value Hardware
St. Francis United Methodist Church
St. Francis Veterinary Clinic
Steve's Collision
Subway – Oak Grove
Subway – St. Francis
T & W Adventures
TC Net-Works, Inc.
That Other Thrift Store
The Bridge
The Courier
The Oaks of Lake George
The Ponds Golf Course & Restaurant
The Refuge Golf Club & Restaurant
Trinity Lutheran Church & School
Tru-Cut Lawns, Inc
Tyrone Transportation, Inc.
Village Bank

Chamber Currents is published by the St. Francis Area Chamber of Commerce

PO Box 655, St. Francis, Minnesota, 55070 • 763-438-5163 • www.stfrancischamber.org • chamber@stfrancischamber.org



St. Francis Area Chamber of Commerce presents...

JUNE 3-5, 2016

ST. FRANCIS PIONEER DAYS

MEDALLION HUNT

- Medallion Hunt begins Monday, May 30 with Daily Clues posted on our website, Facebook and Twitter. For rules and more information, visit www.stfrancischamber.org. Sponsored by the St. Francis Area Chamber of Commerce

13TH ANNUAL AMATEUR PHOTO CONTEST

- Photos (no larger than 4 x 6) can be dropped off at County Market no LATER than Saturday, May 28, 6:00 p.m. (at the Service Counter). For a complete list of rules for the contest, visit www.stfrancischamber.org and click on the Pioneer Days tab. Sponsored by King's County Market

BUSINESS EXPO IN THE PARK

- Friday, Saturday, Sunday, June 3-5, in Community Park
- Businesses, crafters, food vendors, nonprofits will have exposure to thousands of people attending St. Francis Pioneer Days!
- New improved park layout. LIVE entertainment all three days!

PARADE

- Enter your business or group to march in the Pioneer Days Parade on Saturday, June 4!

GET INVOLVED

- Personal and business donations** are being accepted to make this St. Francis Pioneer Days the best ever. If you would like to make a monetary donation, click on the QR Code that will take you to PayPal. Or find the link at www.stfrancischamber.org under the Pioneer Days tab.
- Cleanup is needed all weekend**—it's a great way to fulfill service hours or give back to your community.



Schedule subject to change. Please find complete schedule with updates and all other Pioneer Days information at www.stfrancischamber.org
Updates are also posted on our Facebook and Twitter accounts so make sure to like and follow us.



SCHEDULE OF EVENTS

Carnival-Friday, Saturday, Sunday located in Community Park

FRIDAY, JUNE 3

- 1:00-3:00 pm Garage Logic with Joe Soucheray, broadcasting live at St. Francis True Value Hardware. Sponsored by St. Francis Lions
- 1:00-4:00 pm Free Root Beer Floats at Village Bank. Sponsored by Village Bank
- 5:00 pm Carnival Rides in Community Park
- 5:00-8:00 pm Exhibitor Booths in Community Park
- 5:00-8:00 pm St. Francis Lions & Northlake Brewing Beverage Garden in Community Park. Sponsored by Beef 'O' Brady's
- 5:00-9:00 pm St. Francis Friday Nite Rally - Street Rods, Customs, Classics, Trucks and Motorcycles, St. Francis City Centre Mall parking lot
- 5:00-9:00 pm **Super Stu Band** in the tent at Community Park, free admission
- 7:00-11:00 pm Live Music by **Slippery Steve and Scary Gary** at St. Francis American Legion
- 8:00 pm-Midnight Live Music by **Uncle Chuck** at Patriot Lanes Bar and Grill (21+) cover charge
- 9:00 pm Movies in Community Park, showing **Goonies**. Bring blankets and chairs. Sponsored by Cub Scout Pack 511

SATURDAY, JUNE 4

- 8:00 am All Day St. Francis Lions Club and Northlake Brewing Softball Tournament in Community Park. Concessions by St. Francis Lioness
- 8:00 am Life Fitness 5K Color Run/Walk, starts at St. Francis High School west parking lot, registration begins at 7:00 am. Presented by St. Francis Lions; sponsored by Life Fitness
- 9:00 am-6:00 pm Exhibitor Booths in Community Park
- 9:00 am-8:00 pm St. Francis Lions & Northlake Brewing Beverage Garden in Community Park. Sponsored by Beef 'O' Brady's
- 9:30 am-12:30 pm Wellness Van at ISD 15 Bus Garage. Sponsored by St. Francis Lions
- 10:00 am Carnival rides, craft and food booths in Community Park
- 10:00 am Petting Zoo and Pony Rides by Tommy's Zoo and Stables Community Park
- 10:00 am Brats and Beverages at St. Francis Fire Station. Sponsored by St. Francis Fire Department
- 10:30 am Turtle Race, bring your own turtle (no blanding turtles), registration begins at 10:00 am. in Community Park by grandstands. Sponsored by Cub Scout Pack 511
- 11:30 am Bed Races, in front of St. Francis True Value Hardware Store. Sponsored by Patriot Lanes
- Noon St. Francis Dairy Queen and Killbrew Rootbeer Kids Color Walk. FREE for all kids 12 and under, registration at 11:00 am. Free Killbrew Root Beer.
- 12:15 pm FREE ice cream given out in front of St. Francis Dental. Sponsored by St. Francis Dental
- 1:00 pm GRAND PARADE - Emcees Joe Haag, Community Pride Bank, and Heather Buzzell; Grand Marshal: Retired St. Francis Police Chief Jeff Harapat

- 1:00 pm Home Run Derby at ball field in Community Park. Sponsored by Boulder Lodge
- After Parade Bingo, Brats and Beverages at St. Francis Fire Station. Sponsored by St. Francis Fire Department
- After Parade Horseshoe Tournament at St. Francis American Legion, bring your own partner. Sponsored by St. Francis American Legion
- After Parade-4:00 pm SFHS Alumni All Class Reunion in Woodbury Park
- 2:30 and 3:30 pm **The Wonderful World of Woody**—music, singing, juggling and magic in the tent at Community Park
- 3:00-5:00 pm 2016-17 Miss St. Francis Ambassador Coronation at St. Francis Middle School Gymnasium. Admission is \$5 for adults, \$3 for ages 5-17, under 5 are free.
- 5:00-9:00 pm **David Bedford & Boom, Boom, Boom Band** in the tent at Community Park, free admission
- 6:00-10:00 pm Live Music by **Two Bit Three** at St. Francis American Legion
- 6:00 pm Free hot dogs, games and entertainment for the whole family before the fireworks at Living Hope's Ministry Center across from St. Francis High School. Inflatables open 6:00-8:00 pm.
- 8:00 pm-Midnight Live Music by **Jonah and the Whales** at Patriot Lanes Bar and Grill (21+) cover charge
- 10 Minutes after Dusk **FIREWORKS** at St. Francis High School football field. All school rules will be enforced—no tobacco or alcohol on school grounds. Sponsored by St. Francis Bottle Shop

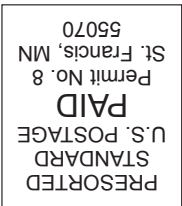
SUNDAY, JUNE 5

- 7:00-9:30 am Free Breakfast served at the St. Francis United Methodist Church located at 3914 229th Avenue NW
- 8:00 am All Day St. Francis Lions Club and Killbrew Root Beer Softball Tournament in Community Park. Concessions by St. Francis Lioness
- 10:00 am Community Worship Service in Community Park hosted by United Methodist Church.
- 10:00 am-4:00 pm Exhibitor Booths in Community Park
- 10:00 am-4:00 pm St. Francis Lions & Northlake Brewing Beverage Garden in Community Park. Sponsored by Beef 'O' Brady's
- 11:00 am Carnival rides, craft and food booths in Community Park
- 11:00 am Petting Zoo and Pony Rides by Tommy's Zoo and Stables in Community Park
- 1:00 pm Kid's Power Pedal Pull in Community Park
- 1:00 pm Garden Tractor Pull at St. Francis American Legion. Registration begins at 10:00 am. Concessions by St. Francis American Legion Auxiliary
- 1:00-4:00 pm Gravel Roads Band in the tent at Community Park, free admission
- 2:00 pm Bingo at Patriot Lanes, 15 games of 75% payout up to \$99, last game coverall guaranteed \$1,000

For more information and how to get involved, visit www.stfrancischamber.org or 763-438-5163

ECRWSS POSTAL PATRON

www.stfrancismn.org
city@stfrancismn.org
St. Francis, MN 55070
23340 Cree Street NW



Events Calendar

- June 3: **Movies in the Park** (Goonies), Community Park
- June 3-5: **St. Francis Pioneer Days!**
- June 17: **Movies in the Park** (Big Hero 6), Community Park
- June 18: **Recycle Event**, Lepage and Sons 9 a.m.
- July 4: **Independence Day** – City Offices Closed
- July 14: **1st Annual Golf Tournament**, Refuge Golf Club 12:30 p.m.
- July 15: **Movies in the Park** (The Sandlot), Community Park
- July 16: **Recycle Event**, Lepage and Sons 9 a.m.
- Aug 2: **National Night Out**, Community Park 6 p.m.
- Aug 9: **State Primary Election**
- Aug 19: **Movies in the Park** (The Minion Movie), Community Park
- Aug 20: **Recycle Event**, Lepage and Sons 9 a.m.
- Every Friday, May 20 - Sept. 9: **Car Show**
St. Francis City Centre Mall, 5:00 p.m.

City Council Meetings, 6 p.m. the first and third Monday of each month.
Planning Commission Meetings, 7 p.m. the third Wednesday of each month.
ISD #15 District Office, 4115 Ambassador Blvd NW

Local Elections

The filing period for the local elections started May 17 and ends May 31 at 5:00 p.m. The filing fee is \$5.

The Primary Election will be held August 9, 2016

Poll locations:
ST FRANCIS P-1:
ST FRANCIS WARMING HOUSE
3948 229th Avenue NW
(St. Francis residents living west of Rum River)

ST FRANCIS P-2:
RUM RIVER NORTH COUNTY PARK
23100 Rum River Blvd NW
(St. Francis residents living east of Rum River)

The General Election will be held on November 8, 2016. The voting hours for both elections will be from 7 a.m. to 8 p.m.

Please visit the City's website www.stfrancismn.org/elections/ for more up-to-date information.

ELECTION JUDGES ARE NEEDED.

